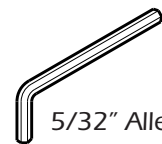




Congratulations, you have purchased the finest exhaust system accessory for your motorcycle on the market. Your Vance & Hines exhaust system is designed and crafted for maximum performance, a perfect fit, a great sound and unbeatable style. Please follow the installation instructions below and if you have any questions, please call our technical support line at (562) 926-5291.

Attention installer (if other than owner), please forward this instruction sheet to the owner of this product. These instructions contain valuable information to the end user.

**TOOLS
 REQUIRED**



5/32" Allen wrench

(A rubber mallet may be needed to remove & install cap)

READ ALL INSTRUCTIONS BEFORE BEGINNING INSTALLATION

**VANCE & HINES QUIET
 INSERT INSTALLATION**

1. Remove end cap from muffler body. End caps are retained by two 1/4-20 button head bolts located on the bottom side of the muffler body (Figure 1). Remove both bolts and discard them.
2. Once the button head bolts have been removed, the end cap and baffle should be removed as one unit.
3. After removal of the end cap/baffle assembly, locate the (3) 10-32 x .375 cap screws that fasten the end cap to the baffle. Remove end cap screws from the baffle (Figure 2) and discard them; remove end cap.
4. Install the end cap onto the new baffle using (3) 10-32 x .375 cap screws (provided). The baffle (A525R) has notches which must be oriented at approx 2 O'clock (looking from rear), while the holes for the end cap/baffle assembly retaining bolts should face down.
5. Reinstall the end cap/baffle assembly into muffler. Make sure notches of baffle rings are oriented to clear the Logo rivets on ProPipe Black systems. Take care to insure the slotted baffle inlet cap (Figure 3) is properly aligned OVER outside of muffler body inlet tube before seating.
6. Install two 1/4-20 button head bolts (provided), use blue loctite #243 on all bolts.
7. After installation and before starting motorcycle, completely clean mufflers with war soapy water and dry with a clean, soft cloth that will not leave a residue. Note: Any residue, oil, or fingerprints will stain the finish when the metal heats up.
8. Be sure to tighten all hardware before starting your motorcycle.

FIGURE 1



FIGURE 2

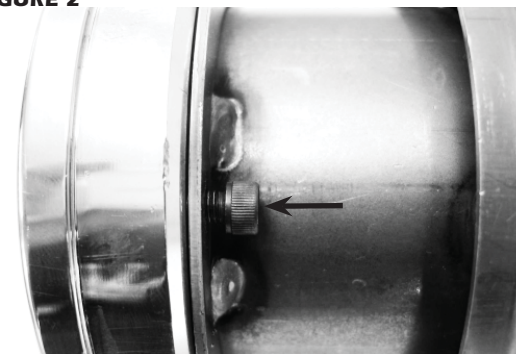
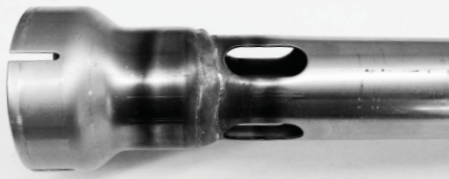


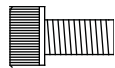
FIGURE 3

Slotted baffle inlet cap

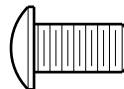


HARDWARE PACKING LIST

ALL PARTS SHOWN ACTUAL SIZE



10-32 X .375 Cap screw x 3



1/4-20 Bottom head bolts x 2

PARTS NOT SHOWN:

A525R Complete Baffle x1

VANCE & HINES OPTIONAL ACCESSORIES

No optional accessories are available at this time.

WARRANTY

Vance & Hines exhaust systems are warranted against defects in material and workmanship for a period of 90 days from the date of purchase from an authorized dealer. This warranty does not cover discoloration of chrome finishes. This warranty is limited to the repair or replacement of a product proven to be defective from normal use. Vance & Hines exhaust systems are designed to fit and operate on OEM motor and chassis. This warranty does not cover any product subject to abuse, misuse, improper installation or modification.

13861 ROSECRANS AVENUE / SANTA FE SPRINGS, CA 90670
SALES: (562) 921-7461 / TECHNICAL: (562) 926-5291 / FAX: (562) 802-0110
VANCEANDHINES.COM