



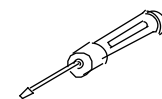
MORE POWER : LESS NOISE



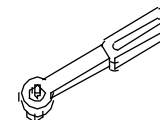
Congratulations, you have purchased the finest exhaust system for your motorcycle on the market. Your Vance & Hines exhaust system is designed and crafted for maximum performance, a perfect fit, a great sound and unbeatable style. Please follow the installation instructions below and if you have any questions, please call our technical support line at (562) 926-5291.

Attention installer (if other than owner), please forward this instruction sheet to the owner of this product. These instructions contain valuable information to the end user.

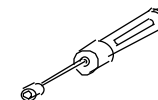
**TOOLS
REQUIRED**



Flat Blade
Screwdriver



3/8" drive
ratchet



5/16" Nutdriver



1/2" & 9/16"
Sockets

READ ALL INSTRUCTIONS BEFORE BEGINNING INSTALLATION

**STOCK EXHAUST
SYSTEM REMOVAL**

1. Loosen heat shield clamps on both the front and rear exhaust pipes to allow for easier access to the exhaust flange nuts.
2. Loosen the clamps holding the mufflers onto the head pipes.
3. Loosen, but do not remove, the exhaust flange nuts (2 for each cylinder) from each flange located at the cylinder head.
4. Remove the 5/16 hex head bolt holding the muffler to the muffler support bracket. Retain the bolt for later use.
5. Carefully remove mufflers by sliding them off each head pipe. NOTE: Assistance may be required.
6. The stock muffler clamps may be re-used. However Vance & Hines recommends replacing them with new clamps (Vance & Hines part # A335HW-R). If using the stock clamps, be sure the T-Bolt does not twist out of the groove during tightening. This could allow the clamp to loosen with use.

FIGURE 1

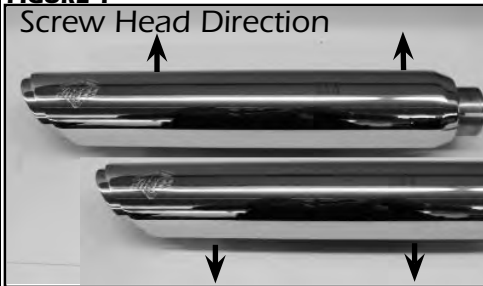


FIGURE 2

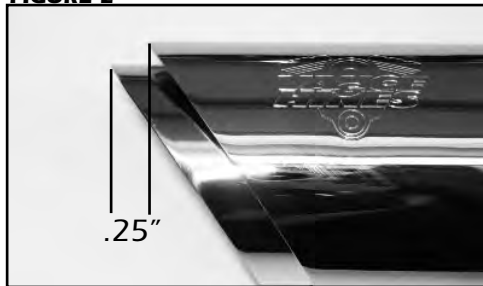


FIGURE 3



VANCE & HINES EXHAUST SYSTEM INSTALLATION

1. Install bracket using stock 5/16 bolt, 5/16 lock nut and washers (supplied). Leave loose at this time. Figure 3.
2. Remove the muffler assemblies and heat shields from their protective packaging. Place each heat shield on a non-abrasive surface such as a towel, blanket or carpet.
3. Carefully lay the muffler assembly into the heat shield and loosely install the hose clamps (supplied) by feeding the tail end of the clamp into the heat shield clips. Note the direction of the clamp screw heads, they must be accessible for adjustment when system is installed (Figure 1).
4. Adjust the heat shield so that the muffler body protrudes beyond the heat shield by .25 inches, and the muffler body and heat shield edges are parallel. (Figure 2). Tighten band clamps.
5. Slide stock exhaust clamps onto the nose of each muffler body. NOTE: Orient the clamp in a way that you can access the nut during installation.
6. Slide mufflers onto the head pipes.
7. Using 5/16" x 5/8" flange head bolts, and nutplates, (Supplied), attach the mufflers to the muffler support bracket. NOTE: Leave them loose at this time.
8. Align mufflers so they sit level. Tighten the muffler mounting bolts and bracket.
9. Tighten exhaust flange nuts on both the front and rear cylinders.
10. Tighten the clamp holding the muffler onto the head pipe. Check orientation with stock head pipe heat shield to insure that you do not have interference between the clamp and stock heatshield.
11. Align head pipe heat shields and tighten the heat shield hose clamps.
12. Check for clearance between all exhaust system components and accessories prone to heat damage.
13. Be sure to check and tighten all hardware before starting your motorcycle.

EXHAUST CARE - HELPFUL HINTS TO AVOID DISCOLORATION OF EXHAUST SYSTEM

- | | |
|---|--|
| 1. When installing a new set of chrome pipes, make sure your hands are clean and free of oil. After installation, thoroughly clean pipes with a soft cloth and cleaning solvent that will leave no residue (chrome wax / polish, glass cleaner, alcohol, ammonia, etc...) before starting the motorcycle. | 2. Avoid long periods of idling as this can cause discoloration. |
| | 3. Intake leaks can cause the engine to run lean and overheat, this could lead to discoloration. |
| | 4. Make sure there are no exhaust leaks at the junction of the exhaust pipes and cylinder head. We recommend replacing gaskets if they are worn. |

VANCE & HINES OPTIONAL ACCESSORIES

FUELPAK



FUEL MANAGEMENT:
Take the guess work out of fuel injection with Fuelpak Fuel Management. Contact your local dealer or call (562) 921-0071 to order. Visit fuelpakfi.com for more information. Fuelpak is intended for racing or off-highway use only, and is not legal for sale or use in California on pollution-controlled vehicles.

QUIET Baffle

21899
21897
21874

Quiet Baffle
Competition Baffle
Replacement Baffle

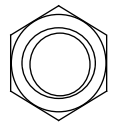
PLEASE NOTE: Every effort is made for Vance & Hines Exhaust Systems to provide improved cornering clearance. However, due to design and space limitations on some motorcycle models, ground and cornering clearance may not be improved and in some cases may be reduced. Be sure to follow proper installation instructions.



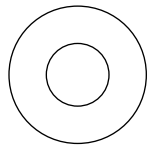
PACKING LIST

MORE POWER : LESS NOISE

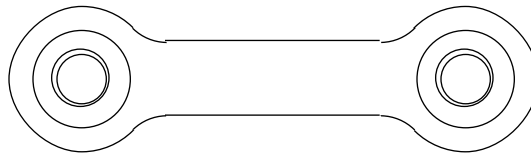
ALL PARTS SHOWN ARE ACTUAL SIZE



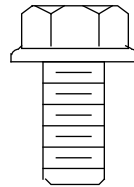
5/16 Locknut x1



5/16 Flat Washer x1



Nut Plate x2



5/16 Flange Bolt x 4



#36 Hose Clamps x 4

PARTS NOT SHOWN:

D746RC	Muffler Assembly	x2
D740HC	Rear muffler heat shield	x1
D749HC	Front muffler heat shield	x1

WARRANTY

Vance & Hines exhaust systems are warranted against defects in material and workmanship for a period of 90 days from the date of purchase from an authorized dealer. This warranty does not cover discoloration of chrome finishes. This warranty is limited to the repair or replacement of a product proven to be defective from normal use. Vance & Hines exhaust systems are designed to fit and operate on OEM motor and chassis. This warranty does not cover any product subject to abuse, misuse, improper installation or modification.

FUEL MANAGEMENT

GET THE MOST OUT OF YOUR RIDING EXPERIENCE...

AN AFTERMARKET EXHAUST SYSTEM IS ONLY YOUR FIRST STEP, NOW YOU NEED FUEL MANAGEMENT.

NOW YOU NEED FUELPAK.

Your fuel injected Harley-Davidson® is equipped with an ECU (electronic control unit) that's programmed to deliver fuel to the motor based on an air/fuel ratio for a stock air filter and stock exhaust system. When you install a performance exhaust system, your airflow changes, so you need a fuel management system that adjusts your air/fuel ratio to match the changes. That fuel management system is Fuelpak. Fuelpak adds and takes away fuel, allowing for a more precise range of refinement in your air/fuel ratio. Get the perfect fuel management combination with your Vance & Hines exhaust system, get Fuelpak. For more information visit the tuning center at fuelpakfi.com

NOTICE: Fuelpak is intended for racing or off-highway use only, and is not legal for sale or use in California on pollution-controlled vehicles.



MORE POWER : LESS NOISE

13861 ROSECRANS AVENUE / SANTA FE SPRINGS, CA 90670
SALES: (562) 921-5388 / TECHNICAL: (562) 926-5291 / FAX: (562) 802-0110
VANCEANDHINES.COM